

IDMC's World-class Fittings



Stainless steel fittings



Solutions Unlimited!

Corporate Office: Plot No. 124-128, GIDC Estate, Vithal Udyog Nagar 388 121, Distt. Anand, Gujarat, India, Ph: +91-2692-236375, 225399 Fax: +91-2692-236164, 234397
E-mail: idmc@idmc.coop Website: www.idmc.coop

Regional Offices: Anand Ph: +91-2692-225167, M: 09904201594, Bengaluru Ph: +91-80-25711984, M: 09844030830, Chennai Ph: +91-44-28140720, M: 09841025483,
Hyderabad Ph: +91-40-23543831, M: 09849543831, Jaipur M: 09828390555, Kolkata Ph: +91-33-55290898, M: 09051093893, Mumbai Ph: +91-22-26856256, M:
09892230187, New Delhi Ph: +91-11-26103810, M: 09810443623, Patna M: 09934360635

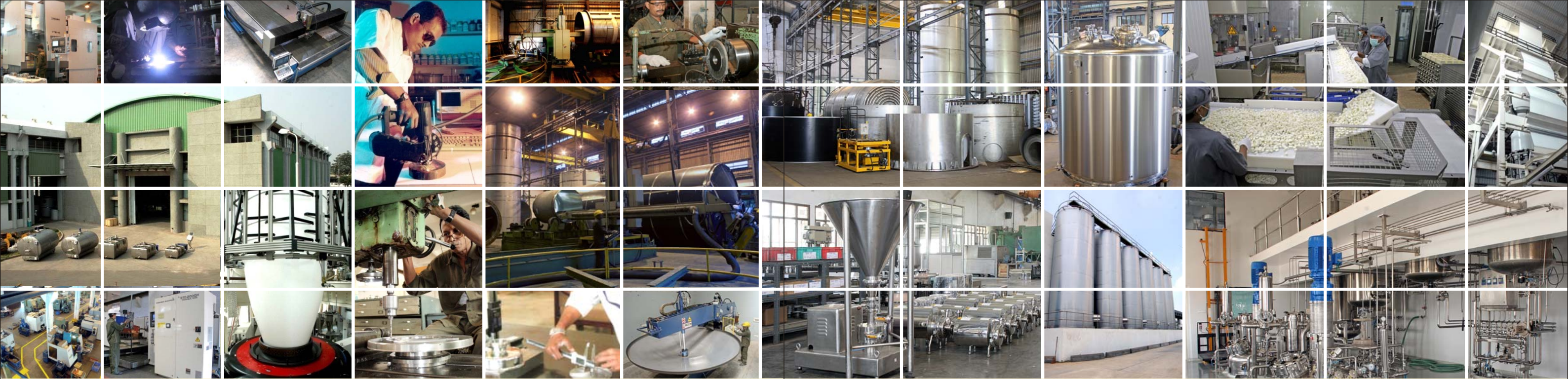


Providing customised solutions for

• DAIRY • PHARMA • BEVERAGES • BREWERY • THERMAL MANAGEMENT SYSTEM • PACKAGING



Solutions Unlimited!



IDMC: Serving the industry since 1979

Set up in the year 1979 and incorporated as a separate company in 1992, IDMC today is one of the largest project engineering and equipment manufacturing companies in the dairy, beverages, pharmaceutical, healthcare, brewery, food processing, confectionary and industrial refrigeration sectors. The company provides comprehensive process and project solutions under one roof with in-house equipment manufacturing and process automation facilities, which is best in class.

Fabrication shop

Excellent fabrication facility spread over clean and large space of over 96,000 sq. ft. and skilled manpower has made IDMC a leading manufacturer of tankages, process vessels, plate heat exchangers and specialized key process equipment for dairy, pharmaceutical, beverage, brewery and food sectors. Automatic polishing facility together with water jet cutting and disc spinning facility provides a cutting edge in job quality with uniform surface finish up to 400 grit on vessels up to 4.8 m diameter.

Machine shop

Equipped with several CNC machining centres, the machine shop caters to the machining requirement of other fabrication shops and manufactures a complete range of sanitary fittings, unions, tri-clover clamp, tees, butterfly, plug and pneumatic valves, turbo blenders, pumps, ice cream freezers, homogenizers and cup filling machines. A good proportion of the total production is exported to highly quality conscious customers in Europe.

Project engineering and execution

Skilled technicians are engaged under the supervision of highly experienced engineers for mechanical, electrical, process and piping installation including automation. Advanced tools such as orbital welding machines are employed to achieve

perfect welds conforming to the latest international standards. IDMC has to its credit several state-of-the-art very high capacity automated fully computer-controlled installations in India.

Process engineering and automation

IDMC provides complete customised software solutions with latest instrumentation and hardware. The SCADA systems adopted by IDMC allow real time MIS both for process and utilities, facilitating an effective monitoring of plant operations. A dedicated and highly skilled team of process and automation engineers provides support to the requirement of customers in the dairy and allied sectors.

Packaging film division

With recently added second module of state-of-the-art blown film plant and ten-colour CI Flexo-printing machine, IDMC has emerged as one of the largest players in this sector in India. The plant is capable of manufacturing three-layer blown film with minimum thickness tolerance for use in various industries such as dairy, food & beverages, bakery, confectionery, cosmetic, edible oils, cereals, personal care products and pharmaceuticals. The plant is equipped with the latest technology machines to produce a wide range of pouches (like side gussets, bottom gussets, wicket bags, stand-up, zipper, 4-panel synchronised pouches, etc.) with surface printed films and laminates.



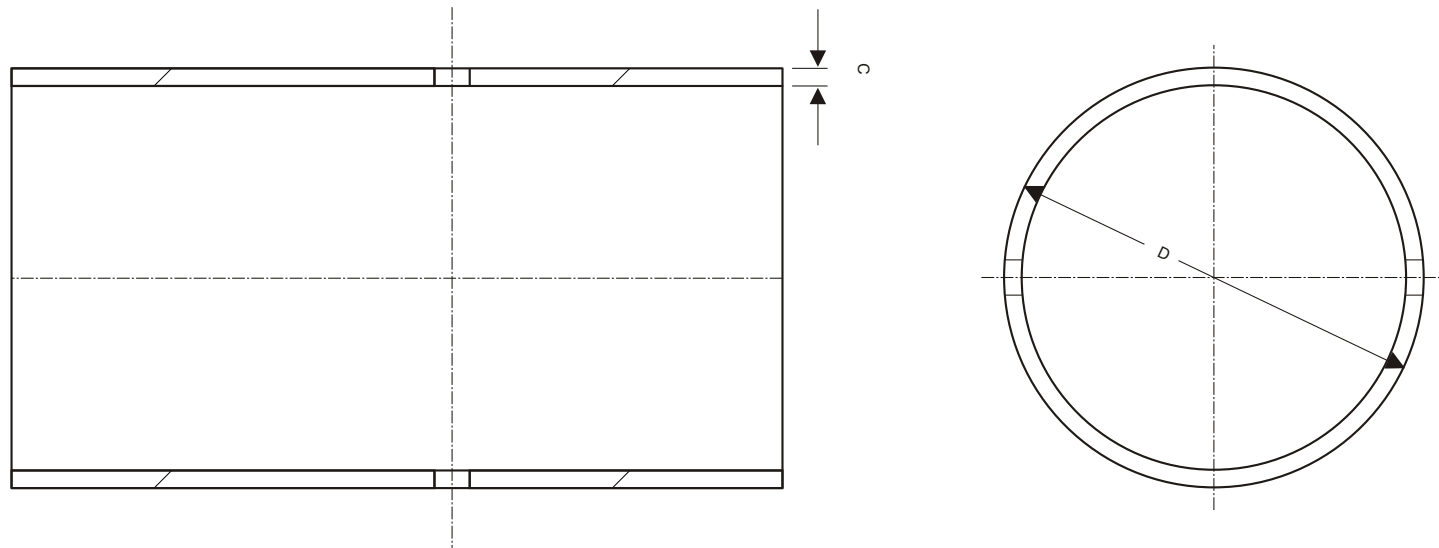
Note: All specifications are subject to change without prior notice.



Tubes

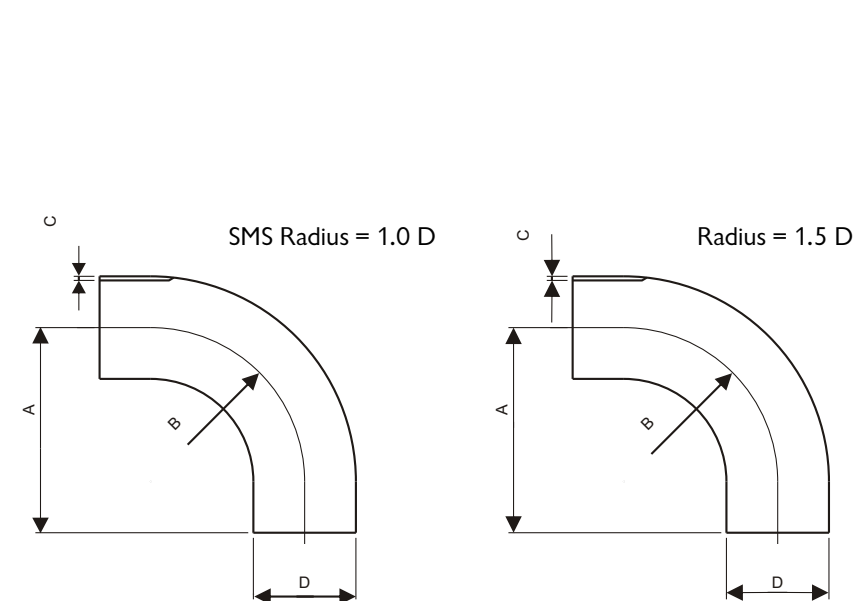
- IDMC's product range includes a wide variety of tubing and fittings in SS316, SS316L and SS304 with internal surface finish options from Ra < 1.6 μ up to Ra=0.4 μ, either electro polished or mechanically polished.
- The tubes are available in ASTM A270 standards in size ranging from 1" to 4" with wall thickness options of 1.6 mm, 2 mm or more as desired.

D mm	C mm
25.4	1.6
38.1	1.6
51.0	1.6
63.5	1.6
76.2	1.6
101.6	2.0



Bends

- Made of AISI 304 and AISI 316 and 316 L.
- Available with short & long radius.
- Available with or without unions.
- IDMC offers a wide range of finishes including matte, raw, bright and polished.
- Finishing options for the internal surfaces are available so as to make them suitable for the most stringent sanitary norms demanded in fully sterile industries.
- The fittings are available from 1" to 4".

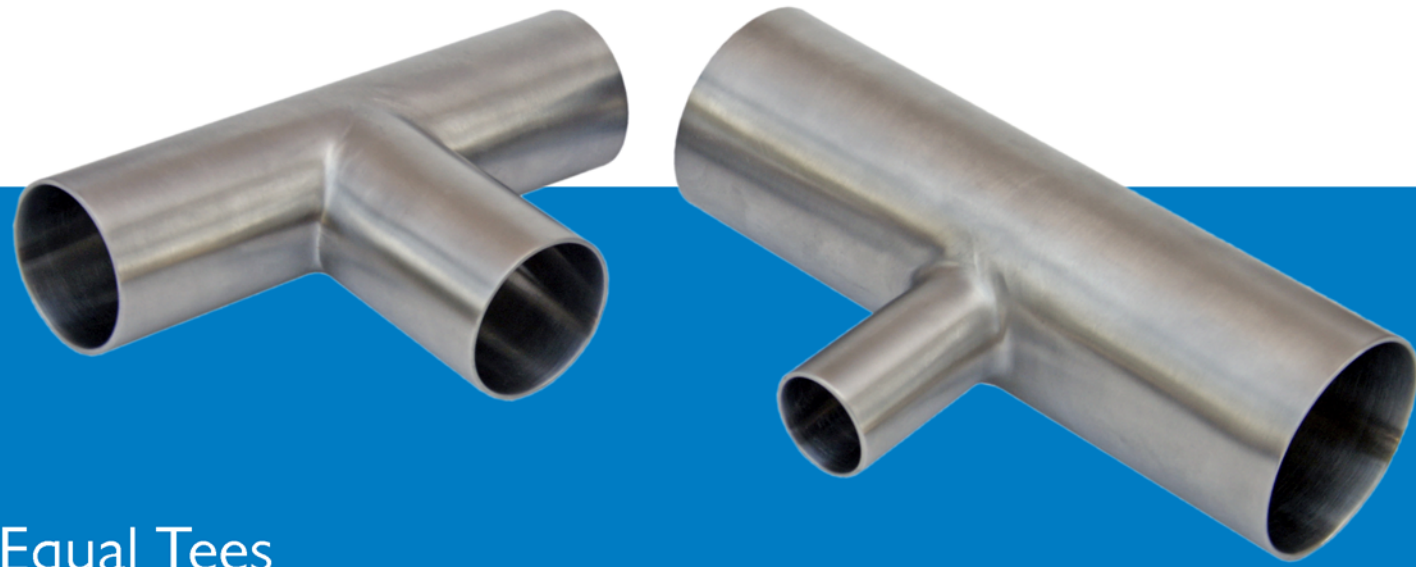


R= 1.0 D

D mm	A mm	B mm	C mm
25.4	55.0	25.4	1.6
38.1	70.0	38.1	1.6
51.0	82.0	51.0	1.6
63.5	105.0	63.5	1.6
76.2	110.0	76.2	1.6
101.6	150.0	101.6	2.0

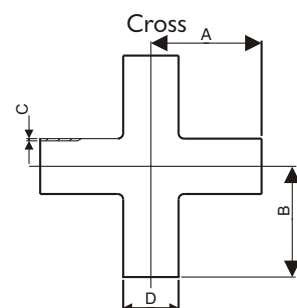
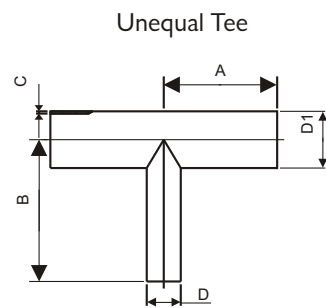
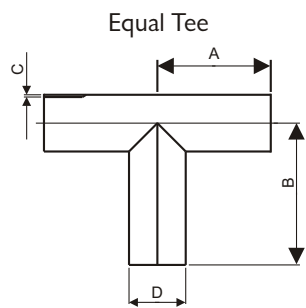
R=1.5 D

D mm	A mm	B mm	C mm
25.4	65.0	38.5	1.6
38.1	85.0	57.0	1.6
51.0	110.0	76.5	1.6
63.5	135.0	95.3	1.6
76.2	155.0	114.3	1.6
101.6	195.0	152.0	2.0



Equal Tees Unequal Tees

- Made of AISI 304, AISI 316 and 316L.
- Tees are offered with cylindrical weldable ends and are available for all tube combinations so that a uniform quality procedure can be achieved.
- Available with or without unions.
- IDMC offers a wide range of finishes including matte, raw, bright and polished.
- Finishing options for the internal surfaces are available so as to make them suitable for the most stringent sanitary norms demanded in fully sterile industries.
- The fittings are available from 1" to 4".



D mm	A mm	B mm	C mm
25.4	55.0	55.0	1.6
38.1	70.0	70.0	1.6
51.0	82.0	82.0	1.6
63.5	105.0	105.0	1.6
76.2	110.0	110.0	1.6
101.6	150.0	150.0	2.0

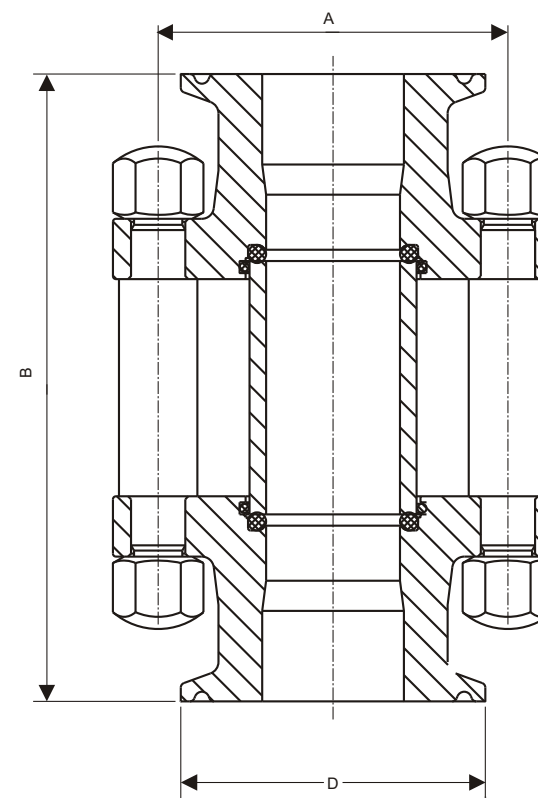
D mm	A mm	B mm	C mm	D1 mm
25.4	70.0	70.0	1.6	38.1
38.1	82.0	82.0	1.6	51.0
38.0	105.0	105.0	1.6	63.5
51.0	105.0	105.0	1.6	63.5
51.0	110.0	110.0	1.6	76.2
63.5	110.0	110.0	2.0	76.2
76.5	150.0	150.0	2.0	101.6

D mm	A mm	B mm	C mm
25.4	55.0	70.0	1.6
38.1	70.0	82.0	1.6
51.0	82.0	105.0	1.6
63.5	105.0	105.0	1.6
76.2	110.0	110.0	1.6
101.6	150.0	110.0	2.0



Inline Sight Glass

- Made of AISI 304 and AISI 316.
- Consists of toughened heat resistant glass and protective stainless steel cover.
- Available in various ends such as union, male part, triclover, etc.
- Suitable for mounting on a vessel, tank or process equipment.



D mm	A mm	B mm
25.4	50.0	140.0
38.1	75.0	160.0
51.0	85.0	180.0
63.5	102.0	290.0
76.2	110.0	300.0



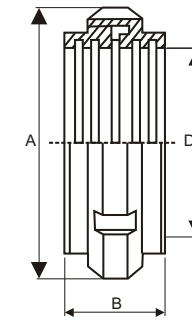
SMS Unions

- Made of AISI 304 and AISI 316.
- Consists of liner, male part, nut & gasket.
- Gasket available in Nitril/Silicon with optional material available on request.
- Available with welded and expandable ends.
- Reducing linear and reducing male part also available.
- The fittings are available from 1" to 4".



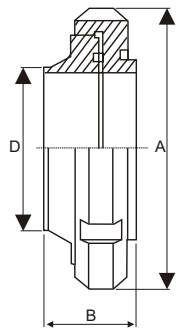
Expanding Union

D mm	A mm	B mm
25.4	51.0	38.0
38.1	74.0	44.0
51.0	84.0	46.0
63.5	100.0	56.0
76.2	114.0	66.0



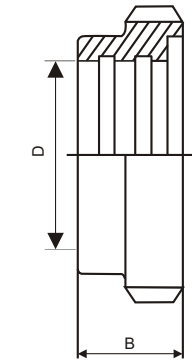
Welding Union

D mm	A mm	B mm
25.4	51.0	23.5
38.1	74.0	30.0
51.0	64.0	30.0
63.5	100.0	34.0
76.2	114.0	35.0



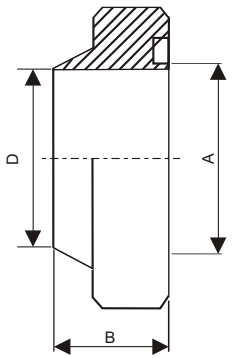
Expanding Male Part

D mm	B mm
25.4	20.0
38.1	23.0
51.0	25.0
63.5	30.0
76.2	35.0



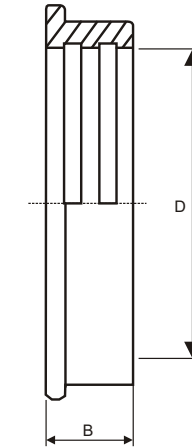
Welding Male Part

D mm	A mm	B mm
25.4	22.2	15.0
38.1	34.9	20.0
51.0	47.6	20.0
63.5	60.3	24.0
76.2	72.0	24.0



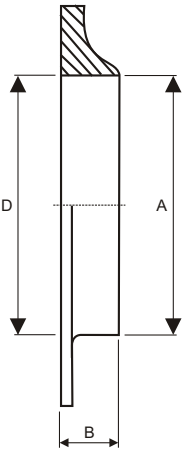
Expanding Linear

D mm	B mm
25.4	17.0
38.1	20.0
51.0	20.0
63.5	25.0
76.2	30.0



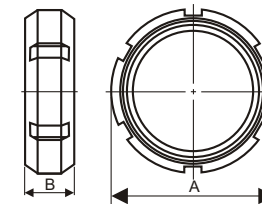
Welding Liner

D mm	A mm	B mm
25.4	22.2	7.5
38.1	34.9	9.0
51.0	47.6	9.0
63.5	60.3	9.0
76.2	72.0	10.0



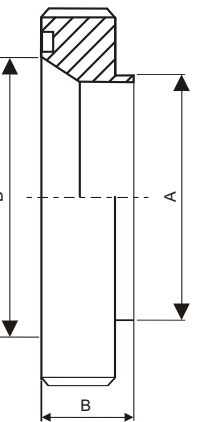
Nut

A mm	B mm
51.0	20.0
74.0	26.0
84.0	26.0
100.0	30.0
114.0	32.0



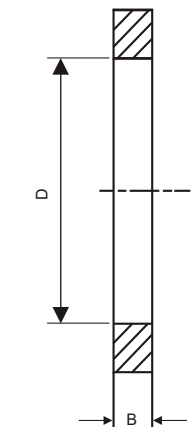
Welding Reducing Male Part

D mm	A mm	B mm
38.1	25.4	23.5
51.0	38.1	30.0
63.5	51.0	30.0
76.2	63.5	34.0
101.6	76.0	35.0



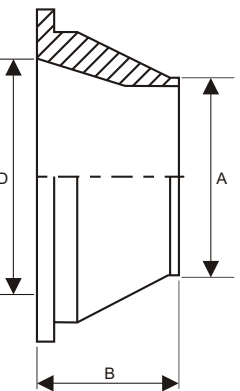
Gasket

D mm	B mm
25.4	5.0
38.1	5.0
51.0	5.0
63.5	5.0
76.2	5.0



Welding Reducing Liner

D mm	A mm	B mm
38.1	25.4	9.0
51.0	38.0	9.0
63.5	51.0	9.0
76.2	63.5	9.0
101.6	76.0	12.0

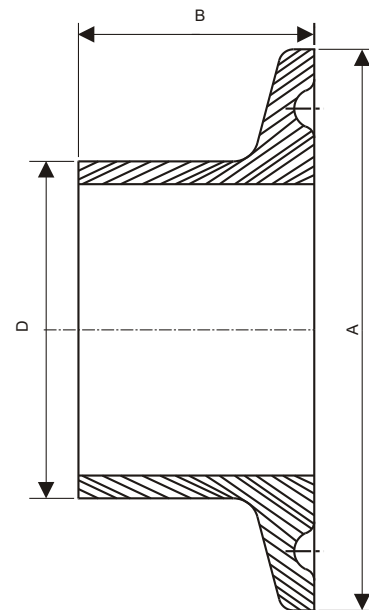
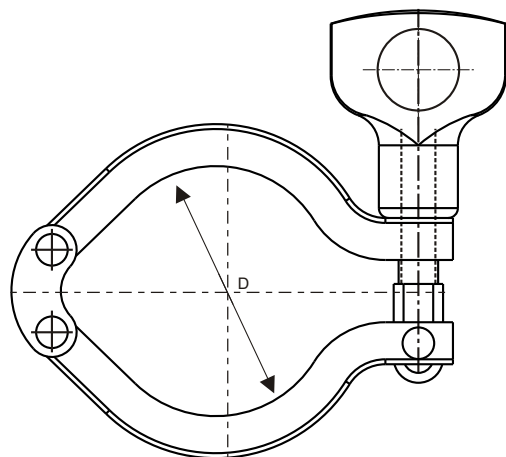




Triclover Clamps with Ferrule

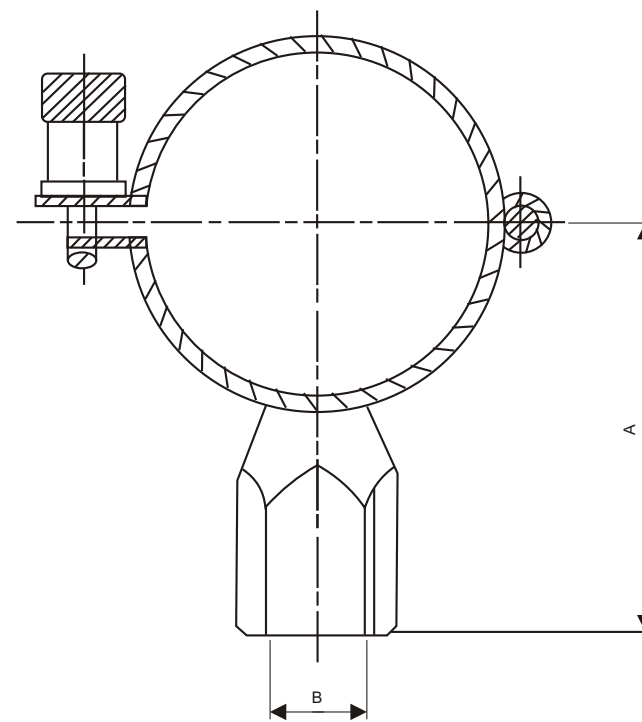
- Triclover clamp is made of AISI304.
- Triclover Ferrule made of AISI 304 and AISI 316, AISI 316L.
- Gasket made of Nitril/Silicon.
- Available with electro polished surface also.
- The fittings are available from 1" to 4".

D mm	A mm	B mm	C mm
25.4	51	28.5	53
38.1	51	28.5	53
51.0	64	28.5	66
63.5	90	28.5	92
76.2	90	28.5	92
101.6	126	35.0	128

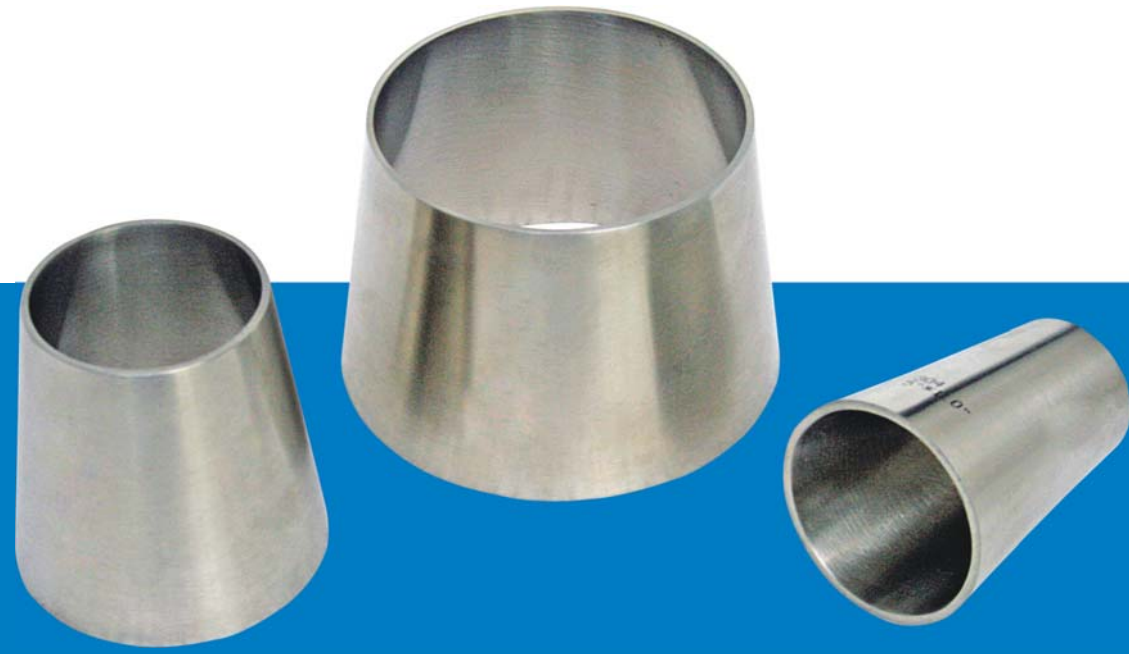


Pipe Holders

- Made of AISI304
- The fittings are available from 1" to 4".



D mm	A mm	B mm
25.0	51.0	12.7
38.1	57.0	12.7
51.0	63.5	12.7
63.5	70.0	12.7
76.2	76.0	12.7
101.6	89.0	12.7

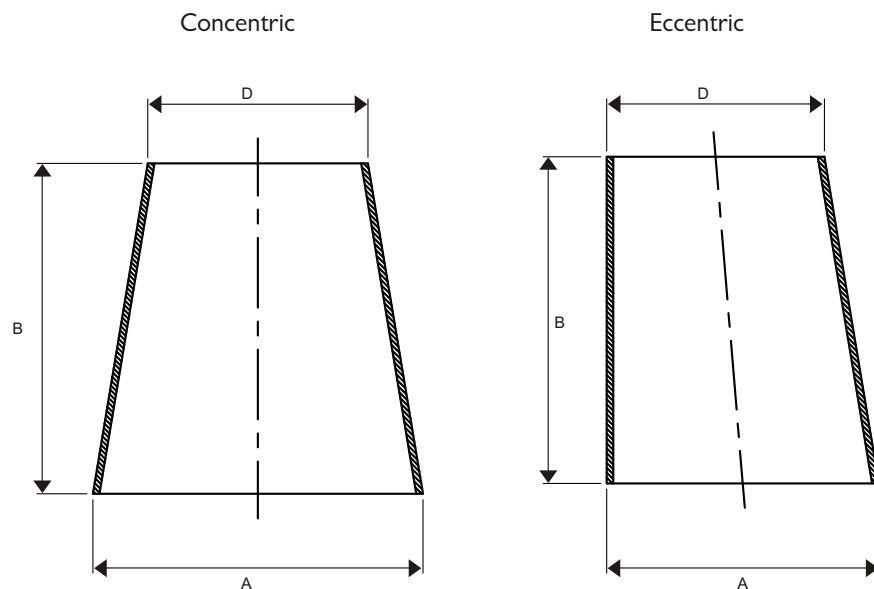


Reducers

- Made of AISI 304 and AISI 316.
- Available in both concentric & eccentric versions.

D mm	A mm	B mm
25.4	38.1	44.0
25.4	51.0	86.0
38.1	51.0	42.0
38.1	63.5	82.0
51.0	63.5	40.0
51.0	76.2	78.0
63.5	76.2	39.0
76.2	101.6	81.0

D mm	A mm	B mm
25.4	38.1	44.0
25.4	51.0	86.0
38.1	51.0	42.0
38.1	63.5	82.0
51.0	63.5	40.0
51.0	76.2	78.0
63.5	76.2	39.0
76.2	101.6	81.0

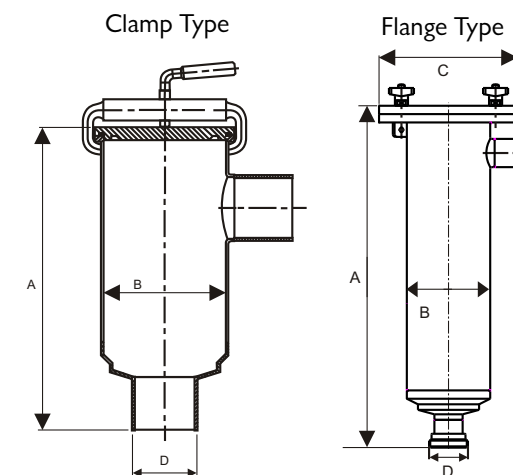


Inline Strainers

- Design: Cylindrical, Tube-in-tube type. All welding joints are ground smooth. All stainless steel surfaces are mirror polished to 180 grit.
- Filter element: SS304 perforated sheet of thickness 0.8mm, hole dia 1.2mm and triangular pitch 2.4 mm. Others available on request.
- Strainer casing: The casing is made from AISI 304 pipe. The thickness of the casing are as below:

Capacity (klph)	Thickness (mm)
0-10	2.8 mm
10-20	3 mm
20-30	4 mm

- Blank and clamp: AISI 304 grooved blank fitted by means of SS Clamp shall be provided at the end opposite to the inlet end for easy maintenance. Thickness of blank is 16 mm.



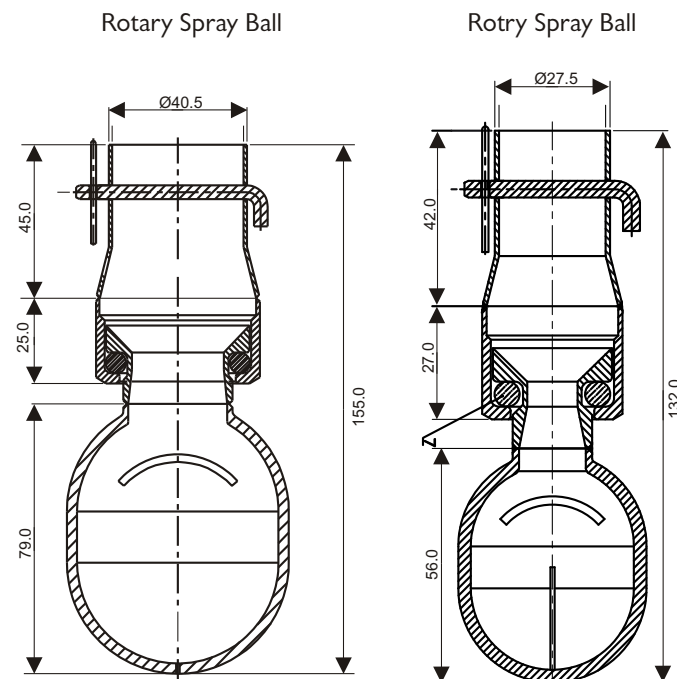
D mm	A mm	B mm
25.4	300.0	76.1
38.1	350.0	76.1
51.0	411.0	101.0
63.0	761.0	200.0
76.2	761.0	200.0

D mm	A mm	B mm	C mm
25.4	300.0	76.1	190.0
38.1	350.0	76.1	190.0
51.0	411.0	101.0	224.0
63.0	761.0	200.0	324.0
76.2	761.0	200.0	324.0



Rotary Spray Balls

- The rotary spray ball is an efficient replacement for the traditional stationary spray ball as it uses low volume of liquid at low pressure.
- MOC : SS316.
- Line connection: 25 mm & 38 mm.
- Ball dia: 45 mm & 64 mm.



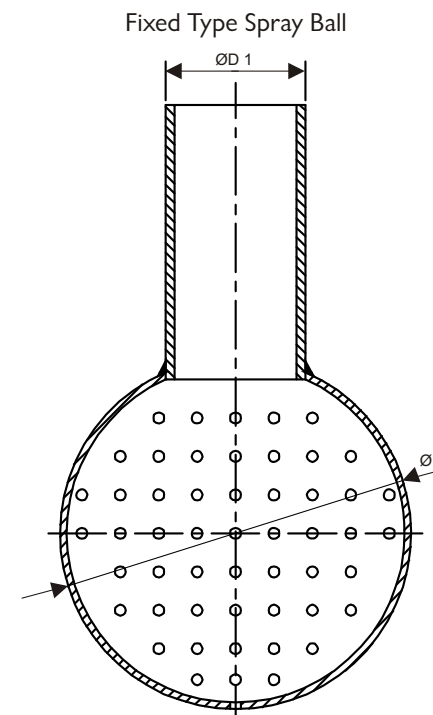
Size: 38 mm

Pressure (bar)	Flow (klph)	Dia. Reach (metre)
0.5	14	4
1.0	22	5
2.0	34	7
3.0	37	7

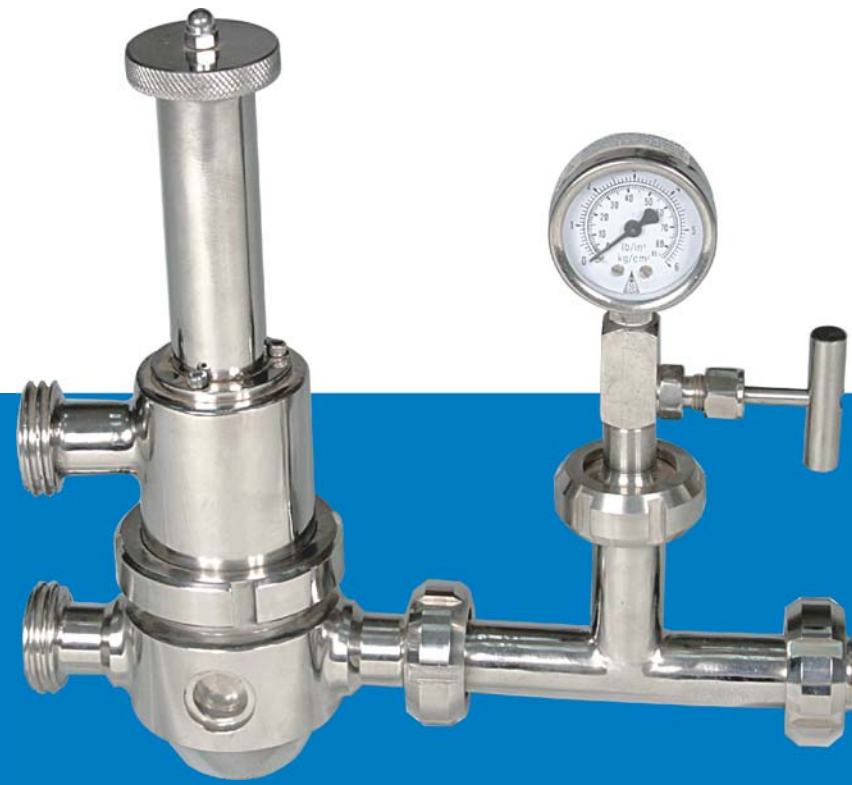


Stationary Spray Balls

- Made of AISI 316.
- Provided with perforated holes for the effective cleaning of process equipment.
- Available with holes either on top portion or on bottom portion or on complete surface.
- Available in sizes from 1" to 4".



D1 inch	D mm
25.4	64.0
38.1	64.0
51.0	94.0
63.0	94.0



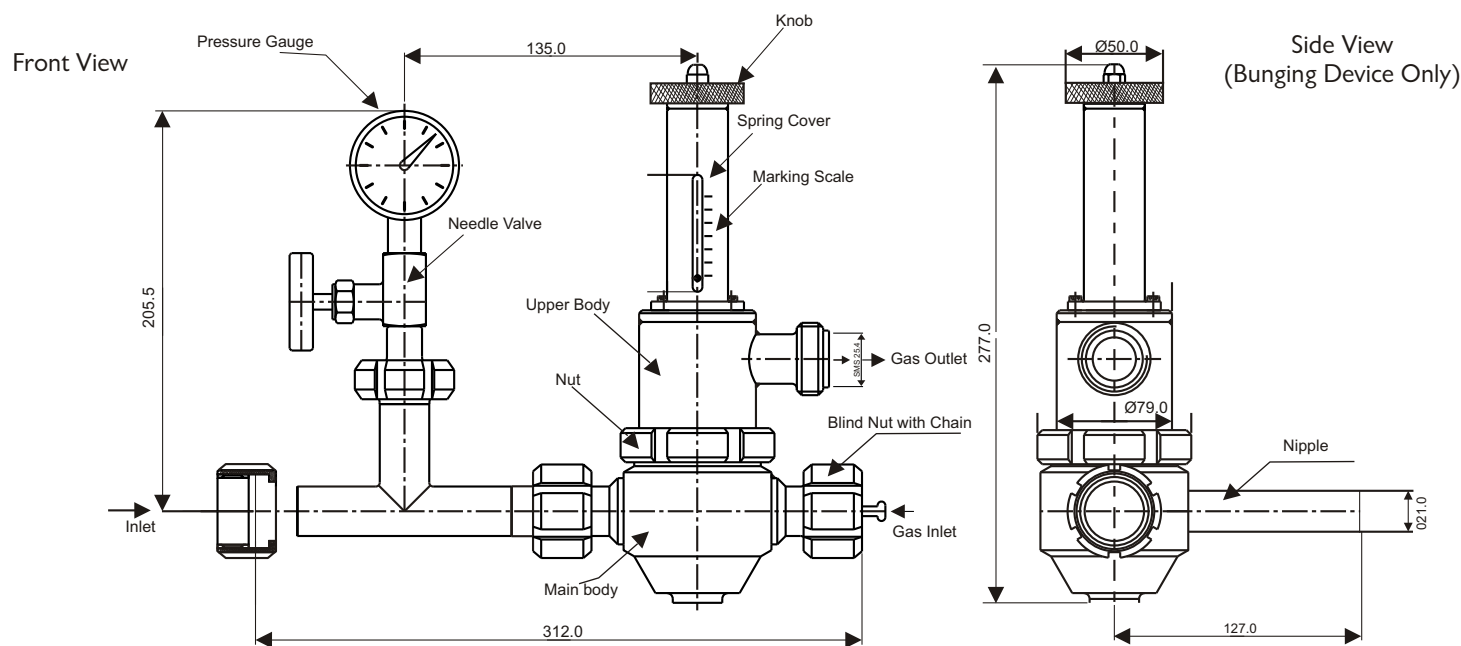
Bunging Devices

Application

- To control CO₂ in vessel to achieve proper fermentation.
- Maintaining the desired constant pressure inside the vessel by removing the excess gas generated during fermentation.
- Providing extra gas pressure inside the vessel in case of insufficient pressure.
- To avoid phenomena of total vacuum inside vessel at any point of operation.

Technical Data

- End connection: 25.4 mm
- Temperature 4°C - 25°C
- Pressure range 0-2.5 kg/sq.cm. & 0-4kg/sq.cm.



Angular Valves

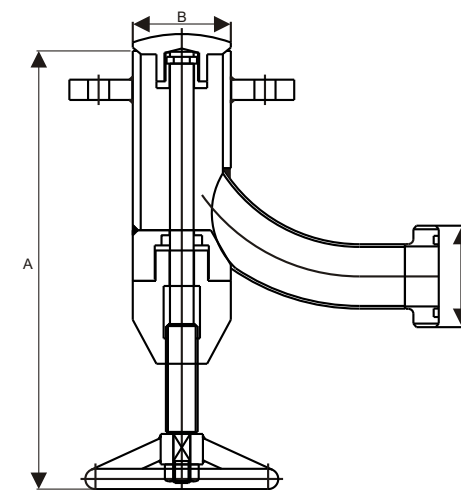
These valves are manually operated valves to regulate the flow anywhere from fully open to fully closed. The valves are designed specifically to accurately control the process. Improved sealing devices and highly accurate machining of the screw rod (stem) provide tight shutoff as well as characterizable control.

Working Features

- The linear action of the screw rod provides tight fit against the seal, which allows for clean separation of the process during closure.
- Tight shutoff is a characteristic of angular valves.
- Material construction: AISI 304, AISI 316 & AISI 316L. Sizes: From 2" to 2½"
- End connection : Union/flange ends.

Salient Features

- Made of AISI 304 and AISI 316
- Valve seat gasket made of Nitril rubber suitable to working temperature up to 90°C.
- Wheel handle is provided for gradual opening and closing of valve.
- Idea for handling of viscous liquids such as ghee, cream, processed cheese, etc.



Sr. No.	D mm	A mm	B mm
1	51.0	231.0	132.0
2	63.5	282.0	143.0



Sampling Cocks

IDMC manufactures Sampling Cocks which are machined from either 304 or 316 stainless steel, with Nitrile O Rings and work by a simple quarter turn handle that turns a stainless steel plug.

Working Principle

IDMC Sampling Cocks are manually operated by a knob and used in dairy, food, beverage, pharmaceutical and other installations where application demands process samples at any point during processing. Samples can be taken out through these sampling valves.

Sampling Cock (A)

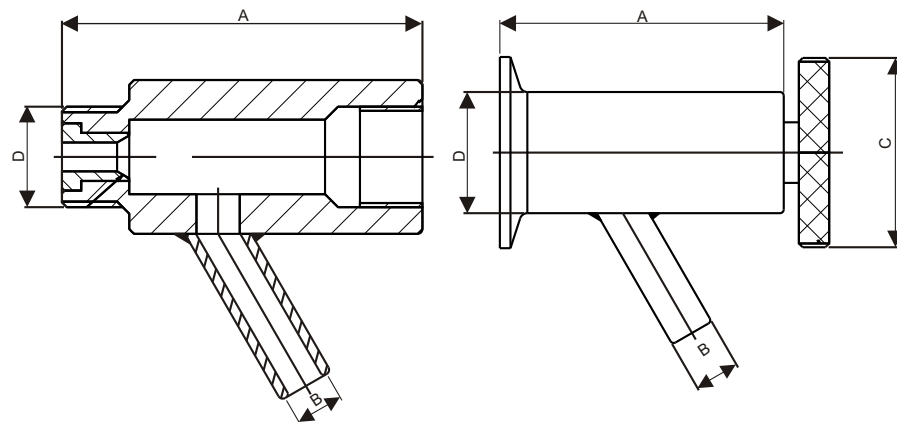
- Made of AISI 304 and AISI 316
- Plug made of stainless steel.

Sampling Cock (B)

- Made of AISI 304, with Teflon seal.
- Provided with 3/8" welding threaded connection

Sr. No.	D mm	A mm	B mm
1	3/4"	81.0	8.0
2	1/2"	81.0	8.0

Sr. No.	D mm	A mm	B mm	C mm
1	3/8"	70.0	8.0	27.0
2	1/2"	67.0	12.0	34.0



Tank Bottom Fittings

- These fittings can be used for mounting level indicators/for collecting samples/for air venting/for releasing the vacuum, etc.
- Made of AISI304 with EPDM seal.
- Available in dia 22 mm & 12.7 mm BSP size.

